

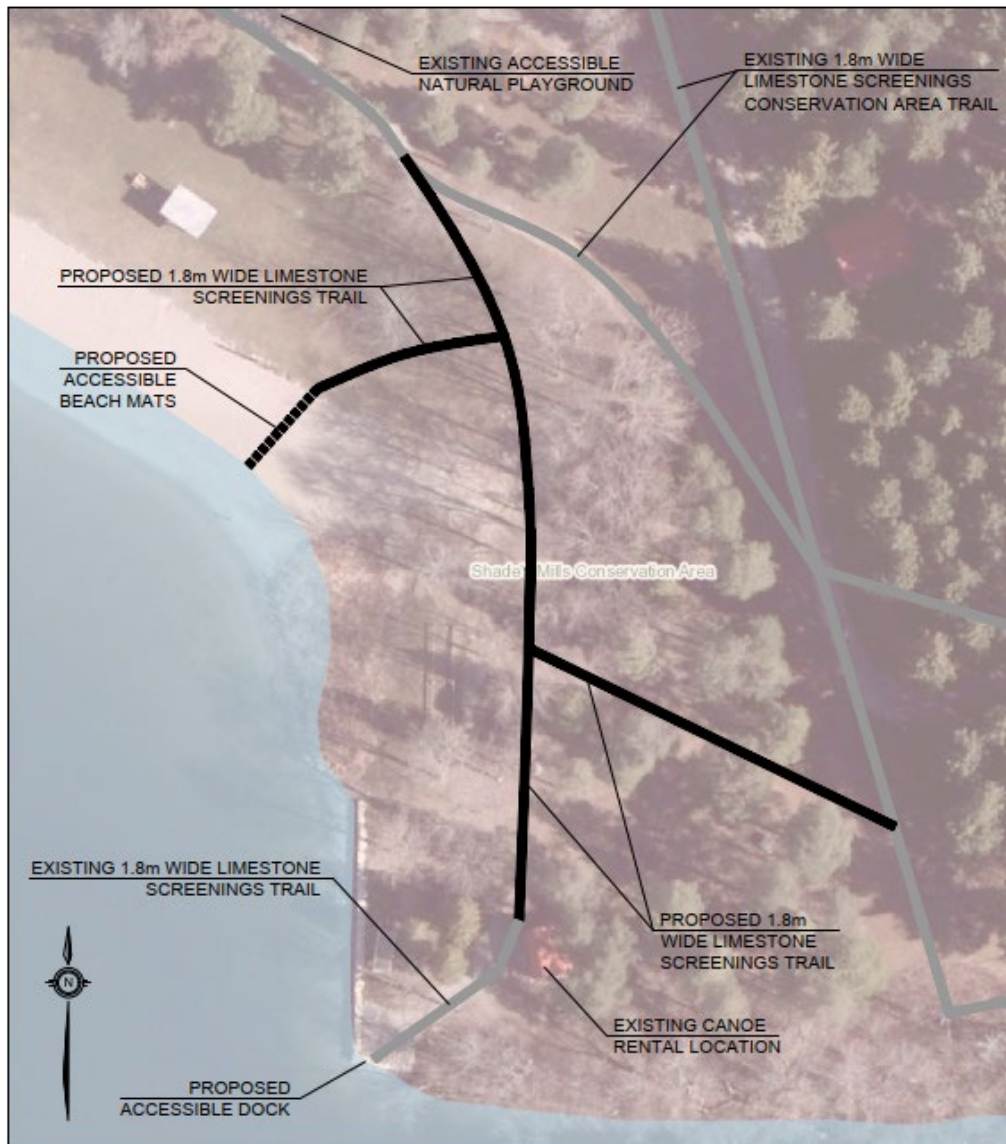


# Grand River Conservation Authority Shade's Mills Accessibility Upgrades Project Details

## Access to Water

The first component of the project will enhance access to the beach and boat launch through improving travel corridors, providing a firm and smooth route over the beach sand and removing barriers getting into and out of a kayak. This will be completed through:

1. Installing an accessible beach mat
2. Purchasing a floating beach wheelchair
3. Purchasing an accessible all-terrain wheelchair
4. Installing an accessible dock and kayak launch
5. Upgrades to the existing wilderness trails that connect the parking lot, beach and boat launch



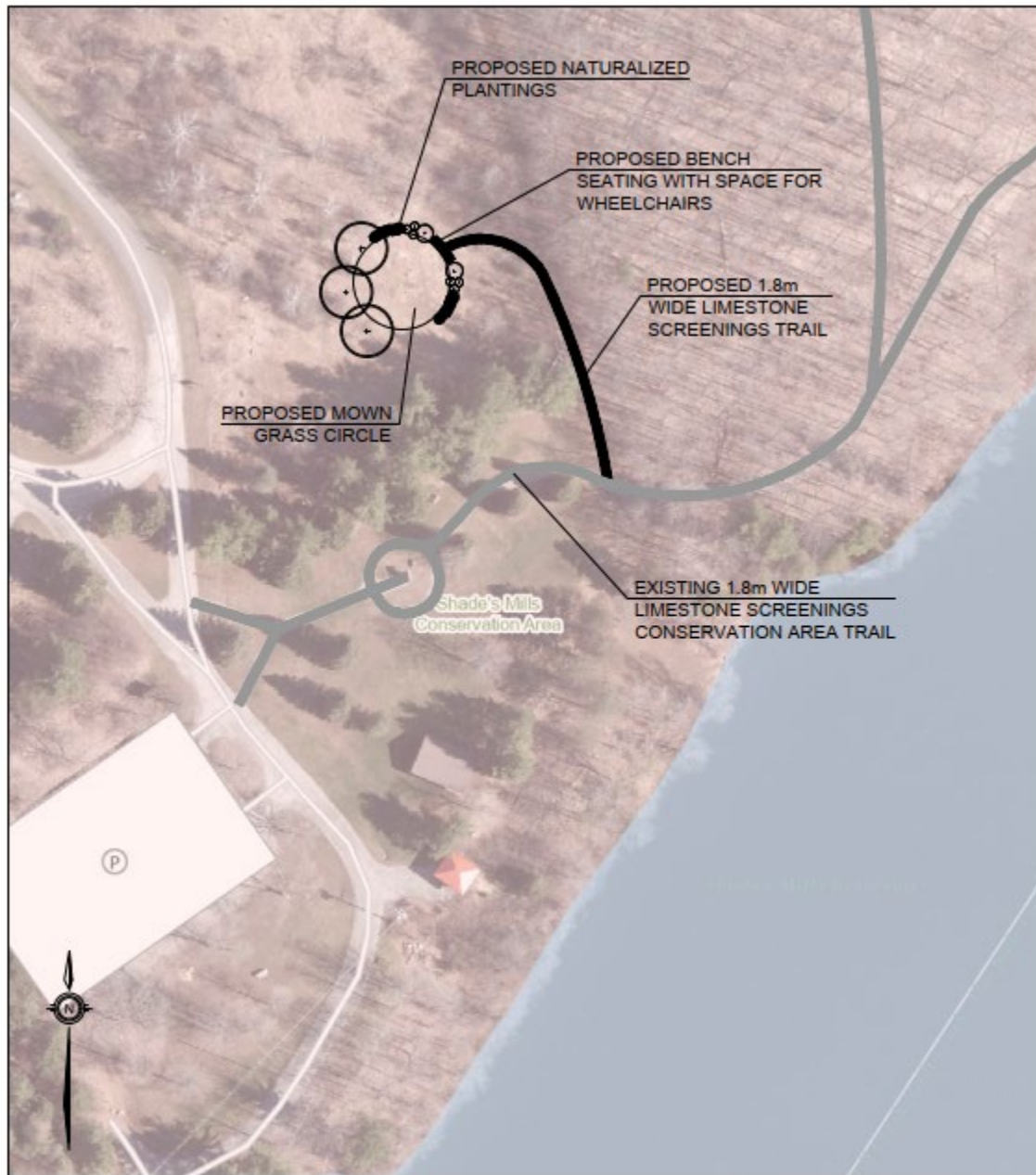
PROJECT SHADE'S MILLS CONSERVATION AREA ACCESSIBLE BEACH ACCESS ROUTE	DATE APRIL 2/24
--------------------------------------------------------------------------	--------------------



# Grand River Conservation Authority Shade's Mills Accessibility Upgrades Project Details

## Meditation Grove – Sensory Area

The second portion of the project will implement a Meditation Grove for visitors with sensory sensitivities. This is a designated quiet, low-stimulus area with limited visual and auditory distractions. A new off-shoot section of the Woodlands Trail will be developed, and a circular area will be mowed and maintained regularly by Conservation Area staff. Native shrubs and trees will surround the perimeter and a pollinator garden will be established. Benches and/or picnic tables will be available for visitors to enjoy the area.



PROJECT SHADE'S MILLS CONSERVATION AREA ACCESSIBLE SENSORY CIRCLE	DATE APRIL 10/24
----------------------------------------------------------------------	---------------------