

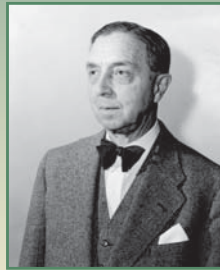
DUMFRIES Conservation Area

A Natural Jewel in the heart of Cambridge



Percy R. Hilborn

Percy R. Hilborn, widely known as PR, was born in Berlin, Ontario in 1886, and died in Preston in 1972. He was a successful businessman and industrialist, Charter President of the Preston Hespeler Rotary Club (1927), and a Founding Board Member of the University of Waterloo.



PR started to preserve farmland as early as 1916 when he purchased the Spottiswood farm on the outskirts of Preston. He purchased the adjacent Dyck farm in 1953, part of the Ciuciura farm in 1955, and the McAllister farm in 1967. On these properties he planted thousands of evergreens, constructed two ponds and plowed the upper pond for public skating in winter.

In 1967, PR donated these parcels, now totaling 75 ha, to the province of Ontario with the provisos that they be allowed to remain wild and be used for passive recreation. In 1970, with PR's permission, the province transferred what became Dumfries Park to the Grand River Conservation Authority.

Dumfries Conservation Area is PR's memorial. He donated it to all seeking solace, to use quietly in their own way, to enjoy, and most of all, to safeguard and protect forever.

Dumfries Conservation Area

Since its formation in 1938, the Grand River Conservation Authority has acquired more than 19,000 ha (50,000 acres) of environmentally important lands throughout the Grand River watershed.

Most of these lands are reforestation areas, wetlands, water control reservoirs and valley lands. Some are active conservation areas for camping and swimming, while others are passive use lands.

Dumfries Conservation Area is an important passive use recreation area totaling 75 ha, made all the more valuable because it contains many diverse habitats right in the heart of Cambridge. A Master Plan, developed in 2004, guides the public use and environmental enhancement of the area for the benefit of future generations.

Dumfries Lands & Natural Features

Although an urban park surrounded by homes and industries, Dumfries offers a surprising number of diverse habitats for naturalists to explore. Forested areas include natural hardwood forest, coniferous plantations, an arboretum planted by the Cambridge Horticultural Society and The Record's Employee Memorial Forest. Water features include two ponds and Groff Mill Creek which meanders the length of Dumfries before entering the Grand River by the Galt Golf & Country Club.



Northern Cardinal

Wildlife in Dumfries includes common urban mammals such as white-tailed deer, fox, raccoon, red squirrel and eastern cottontail rabbit. Birds can be seen year-round, with different seasons featuring mallard ducks, cedar waxwing, northern cardinal and American goldfinch. Fish in Groff Mill Creek include common shiner and creek chub. Common plant species include eastern white pine, red and white oak, sugar maple, serviceberry and wild black cherry.



White-tailed deer (fawn)

Do your part for Dumfries park!

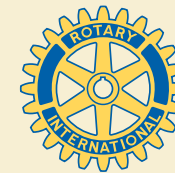
The Grand River Conservation Foundation has adopted Dumfries as one of its fundraising projects. The GRCA and Foundation welcome all partners who wish to preserve this jewel of green in our increasingly urbanized environment.



Partners to date include the four Rotary Clubs of Cambridge, which in 2005 began contributing to the area as a signature project of Rotary International's 100th anniversary celebrations. The Ontario Trillium Foundation assisted the clubs with their work. The newest partner is a nearby industrial neighbour, Babcock & Wilcox Canada, which recognizes the value of the park and its benefit for employees, their families and the surrounding community.

The Foundation accepts charitable donations for Dumfries capital improvement work, while the GRCA will assist groups wanting to donate time and energy for hands-on cleanups and environmental enhancement.

To make a donation, or find out how your group or company can contribute to improvements at Dumfries Conservation Area, contact the Grand River Conservation Foundation at (519) 621-2761 in Cambridge, or email foundation@grandriver.ca



a McDermott company

Babcock & Wilcox Canada



**THE ONTARIO
TRILLIUM
FOUNDATION**



**Friends of the
Environment
Foundation**

"Water — Land — Air belong to all people,
who should not destroy or pollute."

Percy R. Hilborn

Using Dumfries Conservation Area

The main entrance to Dumfries off Dunbar Road boasts a large grassed area suitable for a wide range of activities and events, such as the annual Kite Festival. There is a picnic shelter but portable washrooms must be brought in for events.



Trails are a major feature, totaling 4 km. Some of these are informal, undeveloped footpaths through the woods, while others are more formal trails with moderate access for those with disabilities. A trail also links with trails at the adjacent Chaplin Family YMCA.

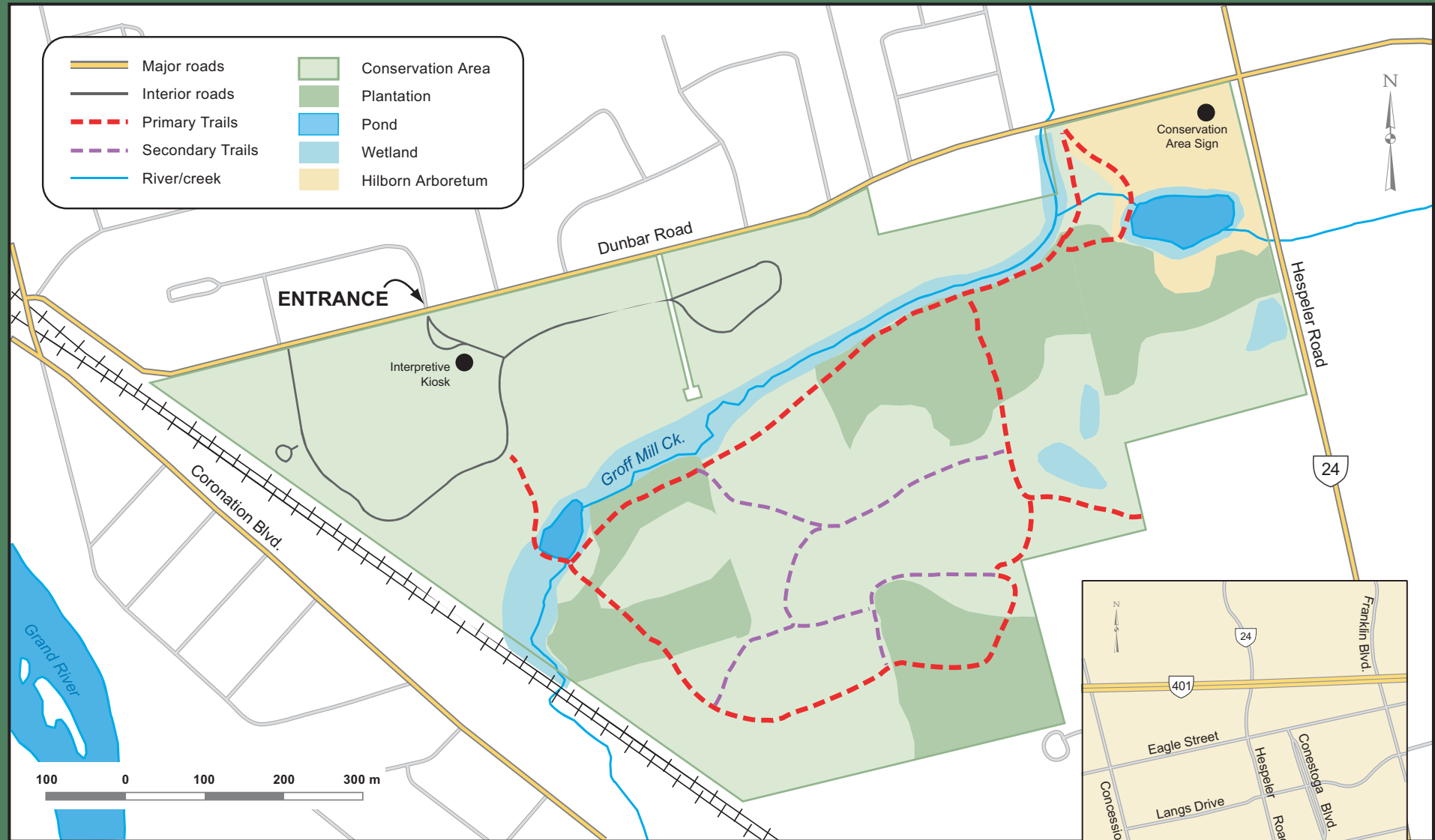


As a passive use area, Dumfries is available to the public with no admission fee for activities such as walking, picnicking, hiking and nature viewing. Motorized vehicles are restricted to designated parking areas only.

If your organization wishes to use the park for a large event, details can be arranged by contacting staff at the nearby Shade's Mills Conservation Area at (519) 621-3697 in Cambridge.

For more information on Dumfries Conservation Area, or other conservation areas in the Grand River watershed, please contact:

Grand River Conservation Authority
400 Clyde Road
Cambridge, ON N1R 5W6
(519) 621-2761
www.grandriver.ca



© Copyright, Grand River Conservation Authority, 2005. This map is for information purposes only, and the Grand River Conservation Authority takes no responsibility for, nor guarantees, the information contained within the map. May not be reproduced or altered in any way.

