



*Speech by*

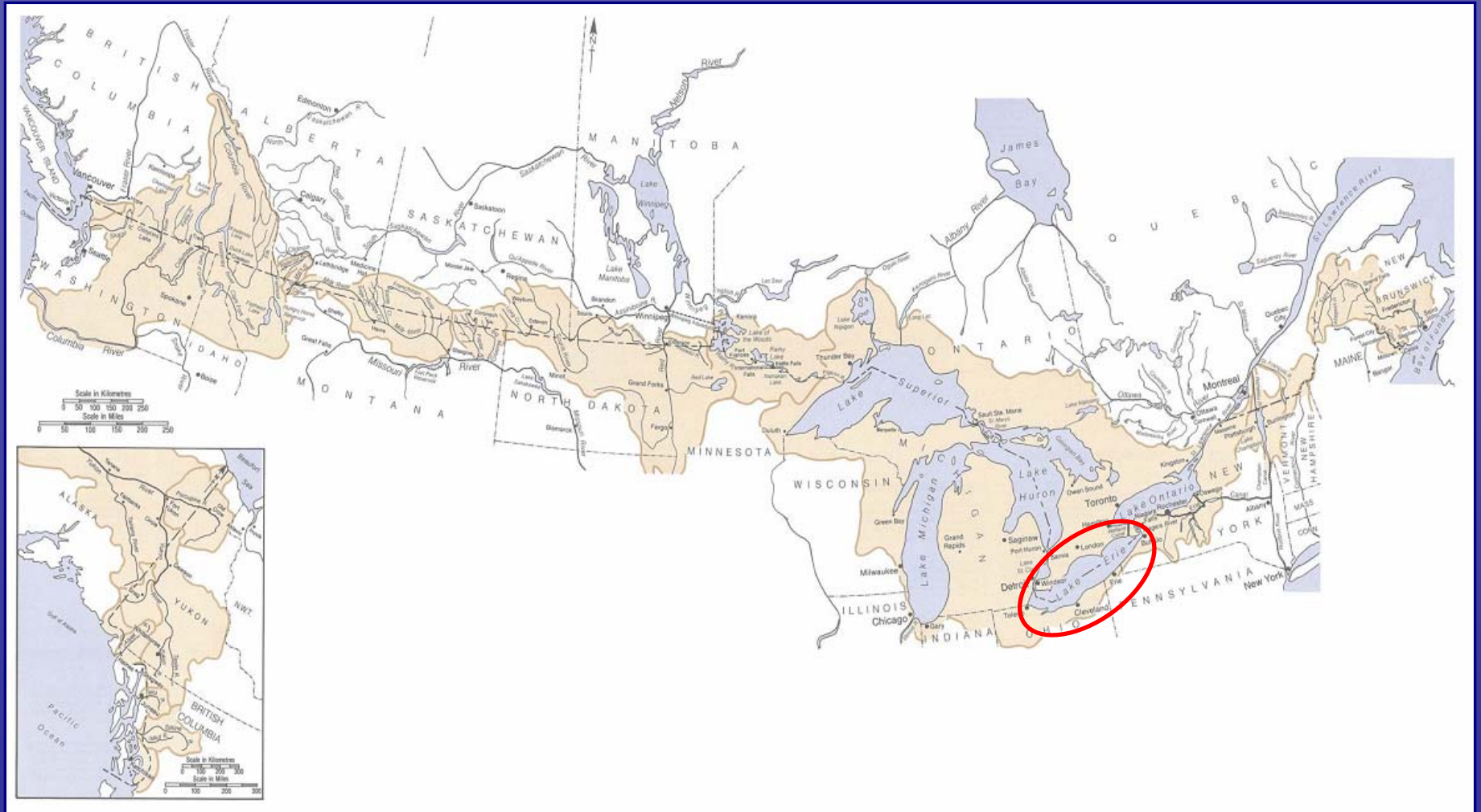
***The Rt. Hon. Herb Gray, P.C., C.C., Q.C.  
Canadian Chair, International Joint Commission***

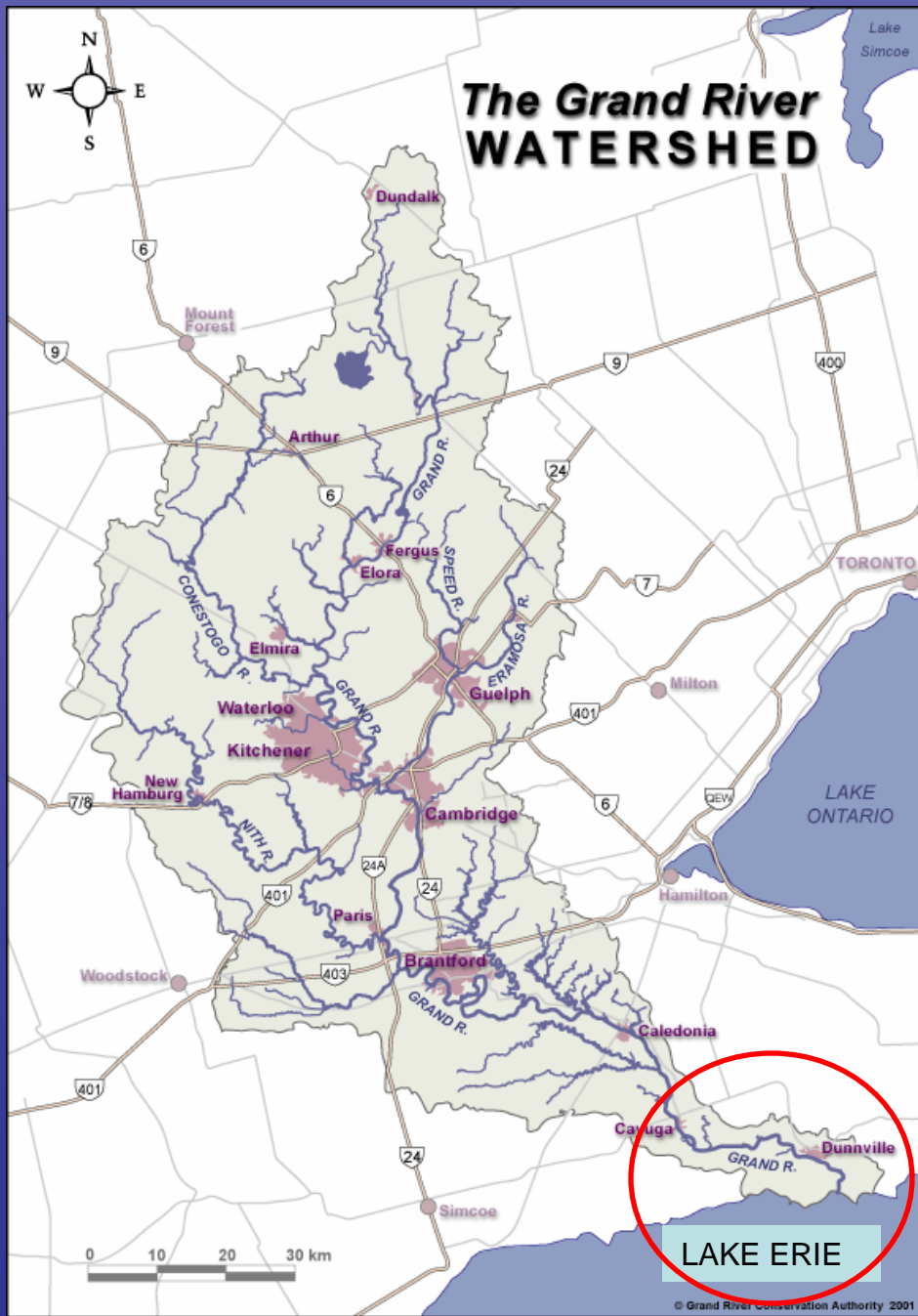
to the

**“6th Annual Grand River Watershed Water Forum”**

**Friday, September 15, 2006  
Cambridge, Ontario**

# THE CANADA – US BOUNDARY WATERS UNDER THE BOUNDRY WATERS TREATY OF 1909







**THE GRAND RIVER  
ENTERS LAKE ERIE  
AT PORT MAITLAND**

**AT THE MOUTH OF GRAND RIVER – YOU CAN  
SEE THE SOIL FLOW INTO LAKE ERIE**



## Some Alien Invasive Species Reported in the Grand River Basin



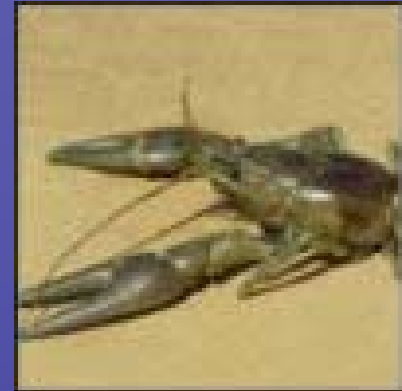
Round Gobi

Above and Below  
Dunville Dam as of  
August 7, 2006



Zebra Mussel

Below Dunville Dam



Rusty Crawfish

Below Dunville Dam



Sea Lamprey

Below Dunville Dam





FOR MORE INFORMATION

[www.ijc.org](http://www.ijc.org)

**Canadian Section Office**

Nick Heisler, Senior Advisor

234 Laurier Ave. West, 22<sup>nd</sup> Floor

Ottawa, ON K1P 6K6

Phone: 1 (613) 992-8367

Fax: 1 (613) 993-5583

Email: [heislern@ottawa.ijc.org](mailto:heislern@ottawa.ijc.org)