

Grand River
Parks

ELORA GORGE



STREAM RESTORATION SITE

With the opening of the Elora Gorge Conservation Area in 1954, the park became Ontario's first official conservation area.

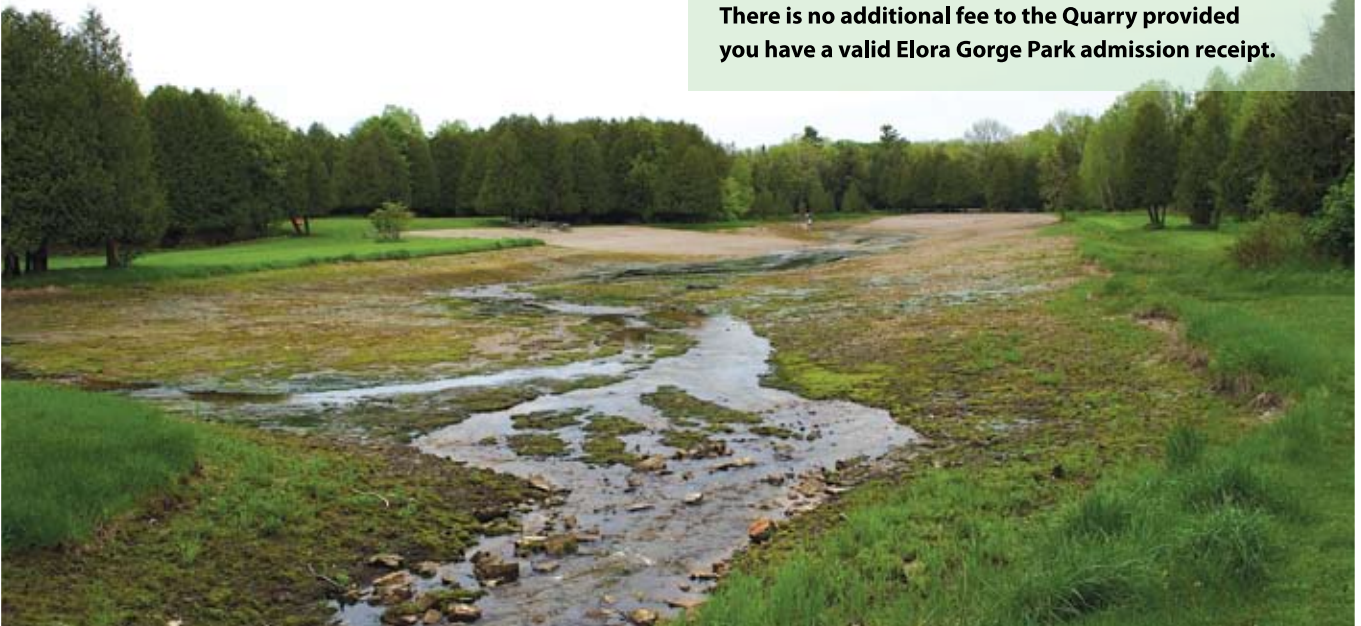
Initially developed as a day use park to provide recreational opportunities the park site and visitor use has grown and expanded. In 1957 a small stream was dammed off and dredged to create a swimming pond. This activity reflected the environmental attitude and knowledge of the era towards small streams and the role they play in the environment. The 54 year old dam and concrete control structure that created the pond has exceeded its design and engineered lifespan and has started to fail. The swim pond itself is also showing its age by its declining water quality through periodic beach closures.

Park staff and GRCA Management have decided to not repair the failing dam structure and instead decided to naturalize the site and restore the stream. Using native plant, shrub and tree species the old pond site will be rehabilitated to improve the environmental function of the site.



Park staff are working on developing an alternative water play area for small children within the park. Elora Gorge Park visitors looking for a beach or swimming experience are welcome to visit the Elora Quarry just up the road.

There is no additional fee to the Quarry provided you have a valid Elora Gorge Park admission receipt.



ENJOY YOUR STAY!



dmorden@grandriver.ca

(519) 846-9742

www.grandriver.ca

