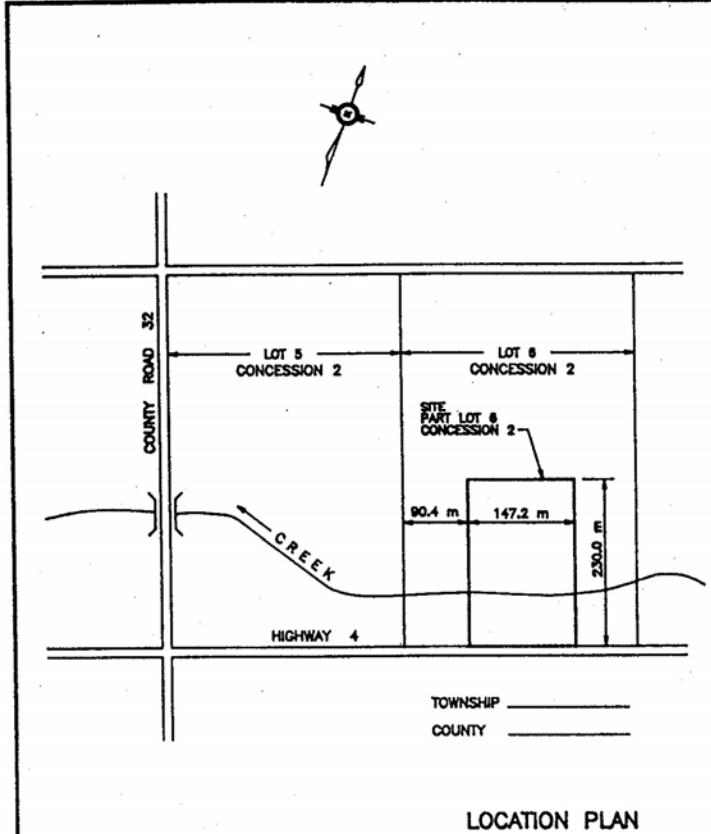
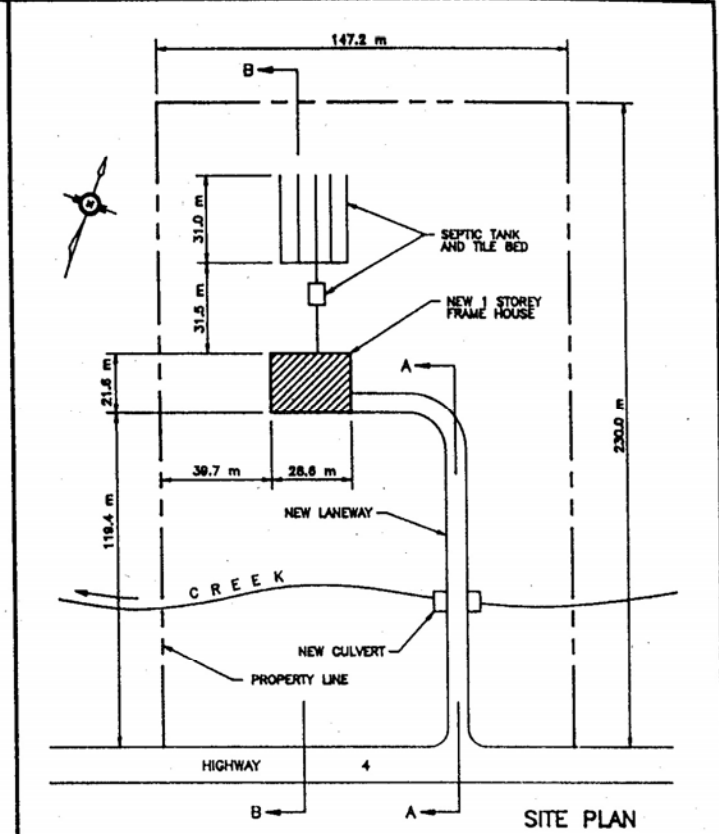


SAMPLE PLANS

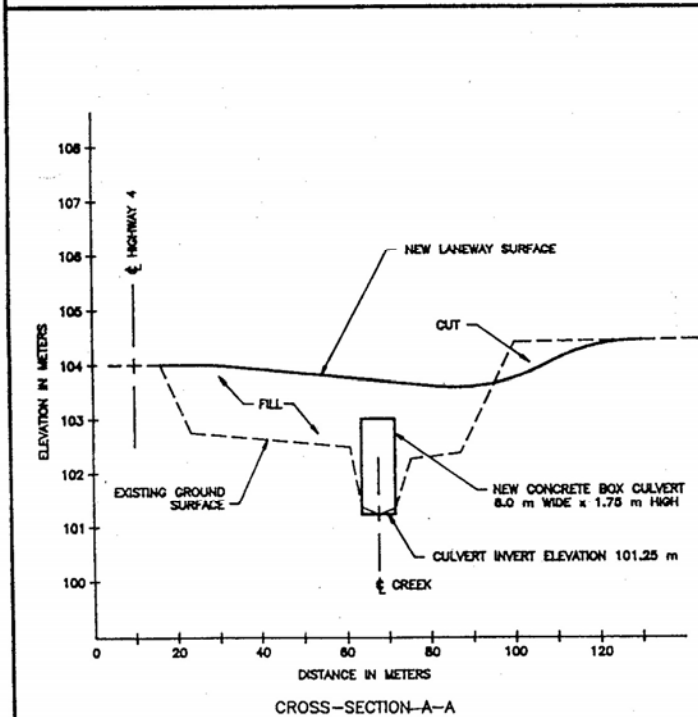
(4 COPIES OF EACH APPROPRIATE PLAN TO BE SUBMITTED WITH APPLICATIONS)



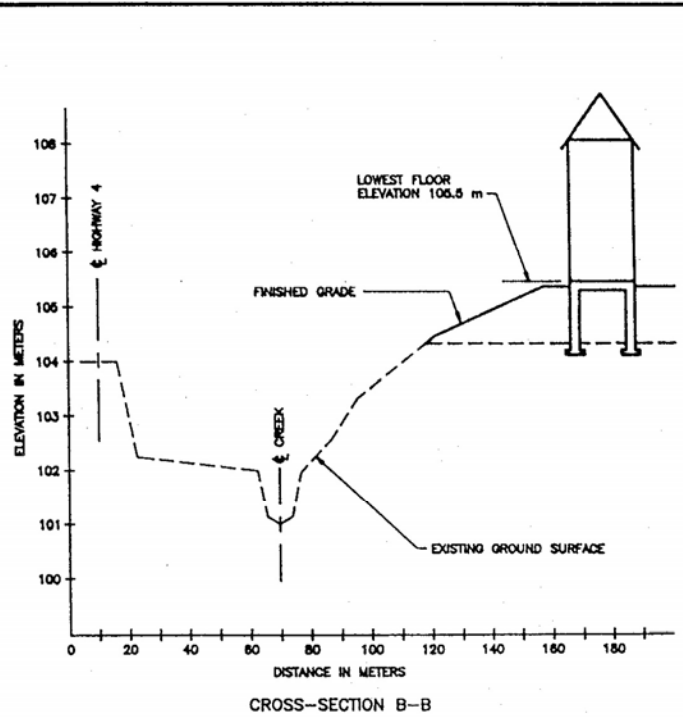
PLAN 1 - WHERE IS IT ?



PLAN 2 - WHAT IS IT ?



PLAN 3 - DETAILS (EG.- WHEN INSTALLING A CULVERT)



PLAN 4 - DETAILS (EG.- WHEN CONSTRUCTING A BUILDING)

The GRCA helps to reduce flooding and preserve the environment in the Grand River watershed through the "Development, Interference with Wetlands and Alterations to Shorelines Regulation 150/06"